



**VIBRO/DYNAMICS**

**Hydra/Level® System**  
Series HXL and HLM Isolators

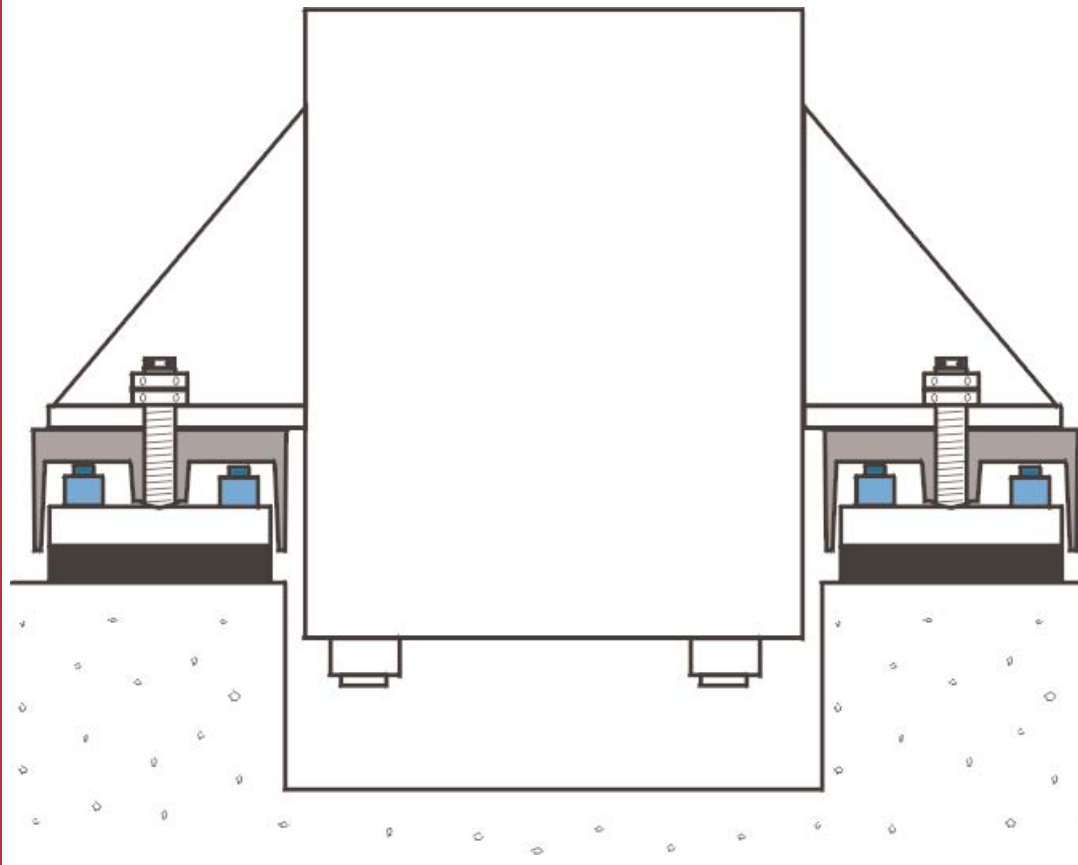


**Press Installation Simplified  
Through Improved Technology**

**Installing**

heavy, pit-mounted presses is a time-consuming process, requiring large hydraulic jacks, cribbing, and a lot of time. Unless, that is, you use Vibro/Dynamics' Isolators equipped with the patented Hydra/Level system.

Hydra/Level is a hydraulic lift-assist feature within our isolators. Built-in hydraulics make leveling and aligning even the heaviest machinery faster and easier, especially when aligning presses to rolling bolster rails.



**Save Time**

Large, pit-mounted presses can be leveled and aligned in less than half a day

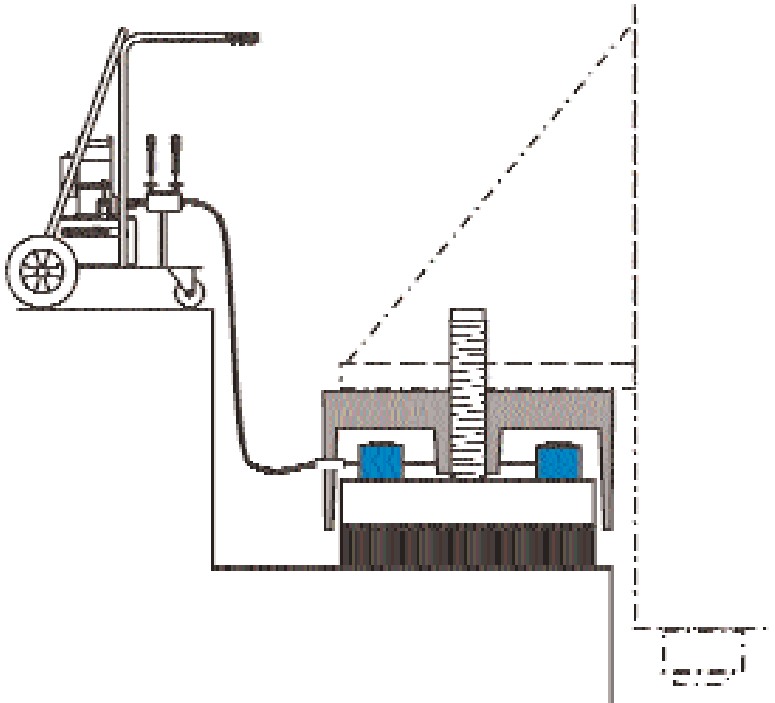
**Save Money**

No separate hydraulic jacks or cribbing, and significant reductions in rigging costs



# HYDRA/LEVEL ISOLATORS

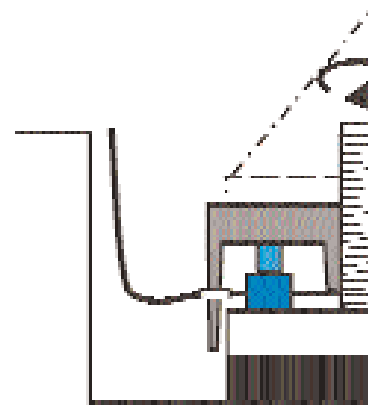
1



Hydra/Level Isolators are installed under each foot and then connected to a Vibro/Dynamics HPU pump unit or equivalent.

*When multiple isolators are used to support one press foot, they are connected together hydraulically, ensuring that each is carrying the same load so that the press foot is properly supported.*

2



The Hydra/Level Isolators' internal press screw can be turned by hand.

*You won't need any separate jacks and alignment adjustments are made in less time and rigging costs. Presses can be quickly reactivated in the future and leveling adjustments be required.*

*The Hydra/Level System is extremely easy to use. The press bed is leveled and aligned and then again when the press is reactivated. Presses can be quickly reactivated in the future and leveling adjustments be required.*

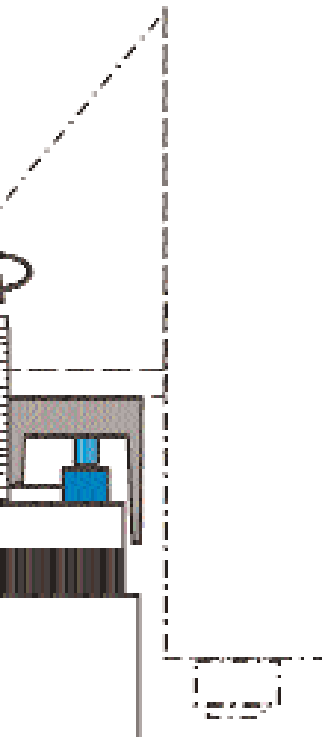
**NO SEPARATE  
HYDRAULIC JACKS,  
NO CRIBBING**



Before Hydra/Level isolators, installing heavy, pit-mounted presses was a time-consuming process requiring separate hydraulic jacks, cribbing, and more expensive rigging costs.

## The Best Way to Install an

# AS EASY AS 1-2-3!



Internal hydraulic cylinders raise the press one foot until the isolator leveling

is complete. No blocks or cribbing! All leveling is made quickly and easily, reducing leveling adjustments to align the press is a breeze.

is extremely valuable considering that the press is leveled when first placed in the pit, and the isolators are fully stacked. The system can be used should the foundation settle and the press is required.

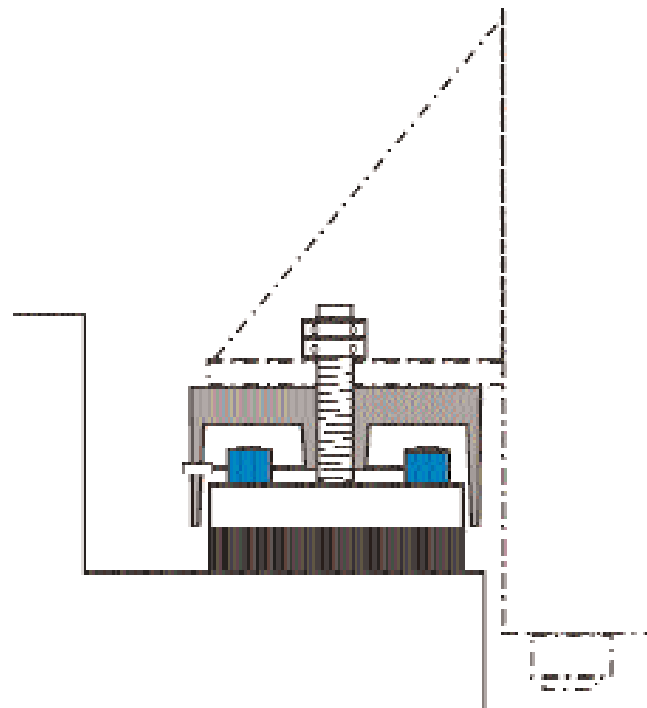


**HYDRA/LEVEL ISOLATORS SPEED INSTALLATION AND SAVE MONEY**

In a short time, presses can be precisely leveled, properly aligned, and properly supported -- a significant improvement on the more expensive and time-consuming process of hard mounting.



# 3



After the press is perfectly leveled and aligned and the locknuts tightened, the hydraulic cylinders are retracted and the pump unit is disconnected.

The Hydra/Level Isolators continue to optimally support the press in a precise level condition at the proper height. The Hydra/Level system is only used during the leveling and alignment process. The hydraulic cylinders within the isolators remain if a future need occurs.

## Level Heavy Pit Mounted

**VIBRO/DYNAMICS**

**Hydra/Level® System**  
**Series HXL and HLM Isolators**



**Service and Accessories**

**Custom Fit for Your Application**

We manufacture thousands of isolators and custom-engineer them to your machine and its particular operating characteristics.

The Hydra/Level hydraulic lift-assist feature is available in many isolator types, including:

**Micro/Level®** HLM, HXL, and MXL series for presses weighing up to 5 million pounds or more.

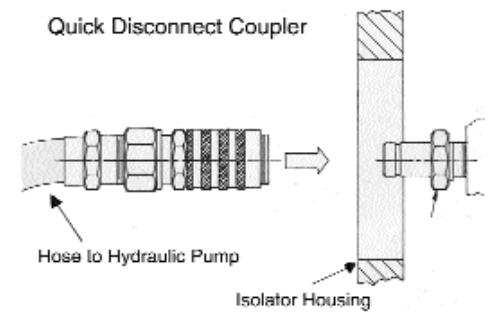
**Hy/Tuned™** and **Hy/Speed®** Steel Coil Spring isolators for severe vibration and shock transmission problems.

Vibro/Dynamics Application Engineering Department will assist you in selecting the isolators that best suit your installation. Give us a call, and we will be happy to assist you with your selection.

Vibro/Dynamics offers a wide range of Hydra/Level Services designed to assist you in the proper installation and use of our Hydra/Level products.

Hydra/Level Service includes two Field Service Technicians and the necessary Hydra/Level pumps, hoses, and power control system equipment required to properly adjust HLX and HLM model isolator heights to achieve proper machine support, level, parallelism and alignment. Two trips or services are recommended. The first service should be conducted right after the bed has been installed. The second service should be conducted after the press has been stacked, and prior to stressing the tie rods.

Vibro/Dynamics has a variety of different size HPU pump units to match the Hydra/Level Isolators recommended for your press. The multi-purpose pumps are needed only during the initial installation, and can be quickly reconnected using the quick disconnect coupler in the event that the press needs to be relevelled or is relocated.



HPU1420 Hydraulic Pump Unit connected to a HLM6800 Micro/Level Isolator with the Hydra/Level feature

**VIBRO/DYNAMICS Corporation**

2443 Braga Drive  
 Broadview, IL 60155-3941  
 E-Mail: [vibro@vibrodynamics.com](mailto:vibro@vibrodynamics.com)  
 Web site: [www.vibrodynamics.com](http://www.vibrodynamics.com)

Telephone 708-345-2050  
 Toll-Free in USA 1-800-842-7668  
 Fax 708-345-2225

Vibro/Dynamics, Micro/Level, Hy/Speed and Hydra/Level are registered trademarks, and Hy/Tuned is a trademark, of Vibro/Dynamics Corporation. ©1999 Vibro/Dynamics Corp. Printed in USA. Vibro/Dynamics Products are covered by one or more of the following U.S. Patents: 3,332,647; 4,047,427; 4,135,392; 4,846,436; 4,930,741; 5,360,195; 5,577,703 and Foreign Patents.